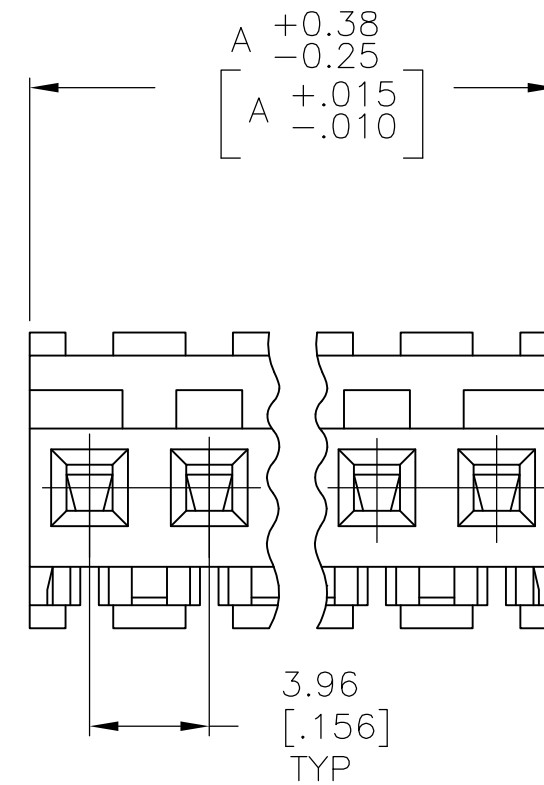
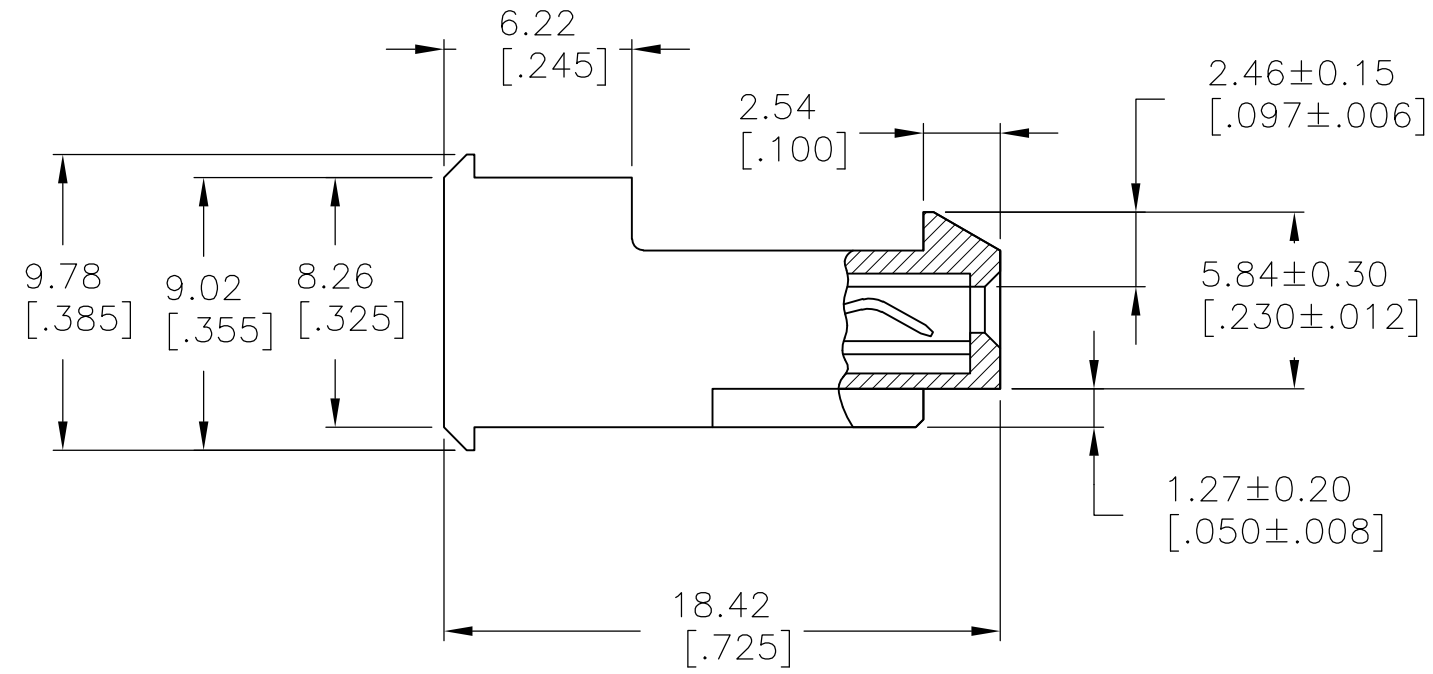
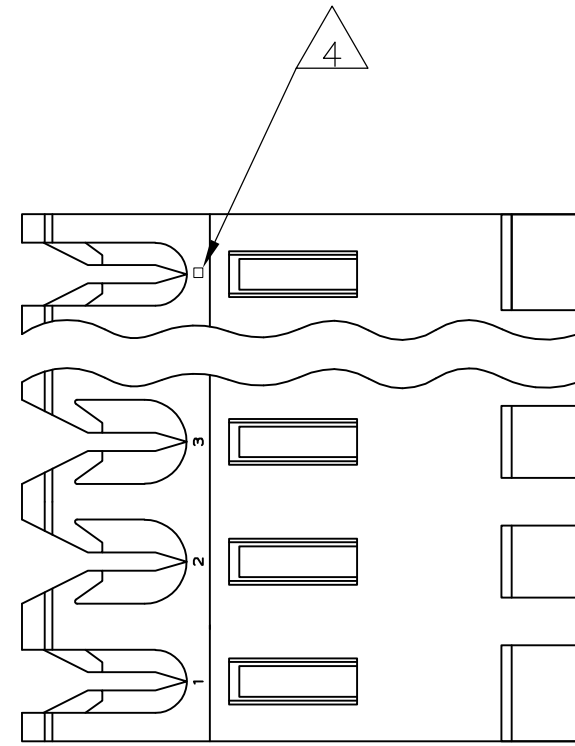


THIS DRAWING IS UNPUBLISHED. RELEASED FOR PUBLICATION
 © COPYRIGHT BY TYCO ELECTRONICS CORPORATION. ALL RIGHTS RESERVED.

LOC		DIST		REVISIONS			
P	LTR	DESCRIPTION		DATE	DWN	APVD	
	T	ECO-07-012861		08JUN07	KW	DB	



95.10	[3.744]	24	5-640601-4
91.14	[3.588]	23	5-640601-3
87.17	[3.432]	22	5-640601-2
83.21	[3.276]	21	5-640601-1
79.25	[3.120]	20	5-640601-0
75.29	[2.964]	19	4-640601-9
71.32	[2.808]	18	4-640601-8
67.36	[2.652]	17	4-640601-7
63.40	[2.496]	16	4-640601-6
59.44	[2.340]	15	4-640601-5
55.47	[2.184]	14	4-640601-4
51.51	[2.028]	13	4-640601-3
47.55	[1.872]	12	4-640601-2
43.59	[1.716]	11	4-640601-1
39.62	[1.560]	10	4-640601-0
35.66	[1.404]	9	3-640601-9
31.70	[1.248]	8	3-640601-8
27.74	[1.092]	7	3-640601-7
23.77	[.936]	6	3-640601-6
19.81	[.780]	5	3-640601-5
15.85	[.624]	4	3-640601-4
11.89	[.468]	3	3-640601-3
7.92	[.312]	2	3-640601-2
95.10	[3.744]	24	2-640601-4
91.14	[3.588]	23	2-640601-3
87.17	[3.432]	22	2-640601-2
83.21	[3.276]	21	2-640601-1
79.25	[3.120]	20	2-640601-0
75.29	[2.964]	19	1-640601-9
71.32	[2.808]	18	1-640601-8
67.36	[2.652]	17	1-640601-7
63.40	[2.496]	16	1-640601-6
59.44	[2.340]	15	1-640601-5
55.47	[2.184]	14	1-640601-4
51.51	[2.028]	13	1-640601-3
47.55	[1.872]	12	1-640601-2
43.59	[1.716]	11	1-640601-1
39.62	[1.560]	10	1-640601-0
35.66	[1.404]	9	640601-9
31.70	[1.248]	8	640601-8
27.74	[1.092]	7	640601-7
23.77	[.936]	6	640601-6
19.81	[.780]	5	640601-5
15.85	[.624]	4	640601-4
11.89	[.468]	3	640601-3
7.92	[.312]	2	640601-2
DIM A		NO OF CIRCUITS	PART NO

1 MATERIAL: CONNECTOR - NYLON UL94V-2 (RED).
 CONTACTS - 0.30[.012] THICK COPPER ALLOY
 BRIGHT TIN-LEAD 0.00203[.000080] MIN
 THICK FOR CONTACTS 640601-2 THRU 2-640601-4
 MATTE WHISKER MITIGATED TIN 0.00203[.000080]
 MIN THICKNESS OVER NICKEL UNDERPLATE FOR
 3-640601-2 THRU 5-640601-4

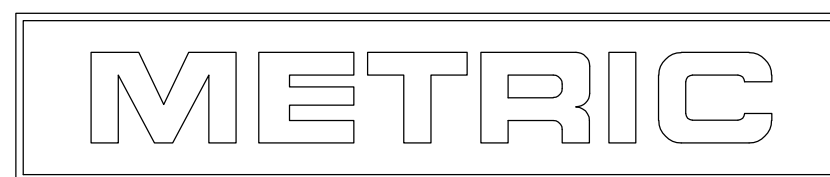
2. CONTACTS ACCEPT 22 AWG WIRE WITH 2.41[.095] MAX INSULATION DIAMETER.

3. CONTACTS MUST ACCEPT 1.14±0.03[.045±.001] SQUARE POST AND REMAIN LOCKED IN POSITION.

4 IDENTIFICATION NUMBER FOR LAST CIRCUIT MAY NOT APPEAR ON ALL ASSEMBLIES.

5. DIMENSIONS IN BRACKETS ARE IN INCHES.

6. HOUSING FEATURES ARE: FEED-THRU WITH LOCKING RAMP.



THIS DRAWING IS A CONTROLLED DOCUMENT.		DWN B. LEWIS 12 FEB 91	Tyco Electronics Corporation Harrisburg, Pa 17105-3608	
DIMENSIONS: mm [INCHES]		CHK R. SWING 12 FEB 91	Tyco Electronics Corporation	
TOLERANCES UNLESS OTHERWISE SPECIFIED:		APVD D. CLARK 19 FEB 91	NAME	
0 PLC ± -		PRODUCT SPEC	MTA-156 CONNECTOR ASSEMBLY, 22 AWG, STANDARD	
1 PLC ± -		APPLICATION SPEC	-	
2 PLC ± -		108-1051	SIZE	CAGE CODE
3 PLC ± -		114-1020	A2	00779
4 PLC ± -		WEIGHT	DRAWING NO	RESTRICTED TO
ANGLES ± -		-	C=640601	-
FINISH		CUSTOMER DRAWING		
1		SCALE	SHEET	REV
		4:1	1 OF 1	T